

6 5 4 3 2 1

D

C

B

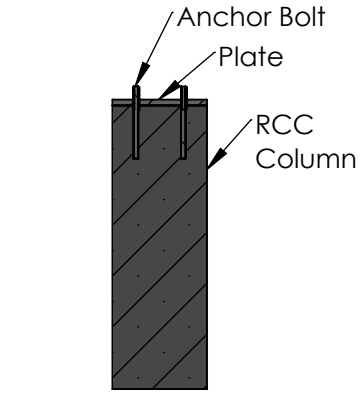
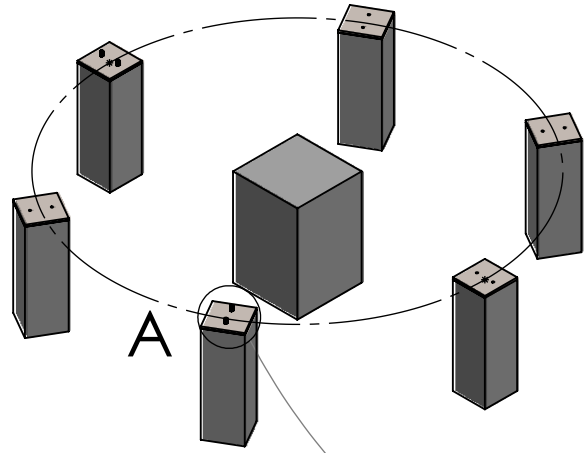
A

D

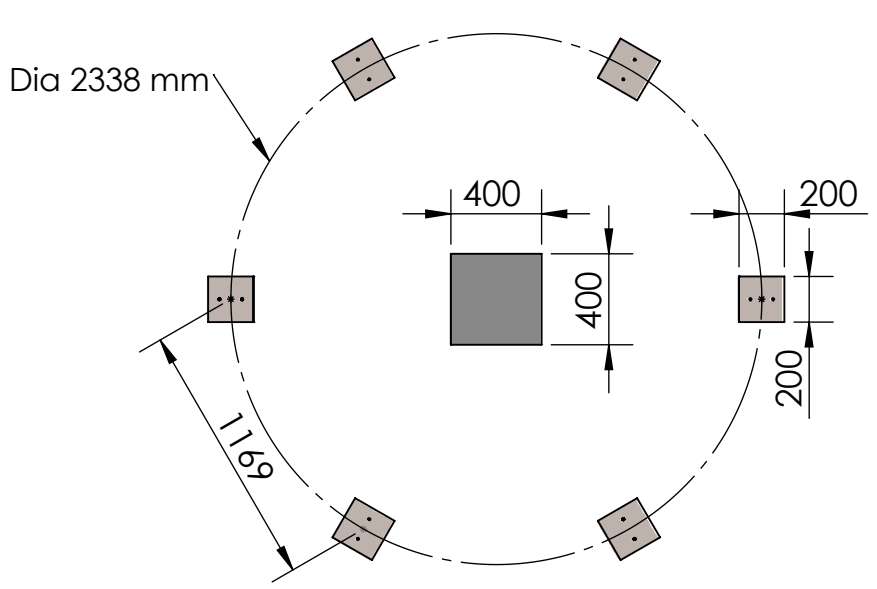
C

B

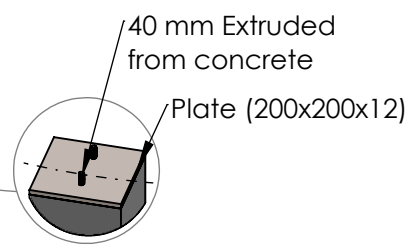
A



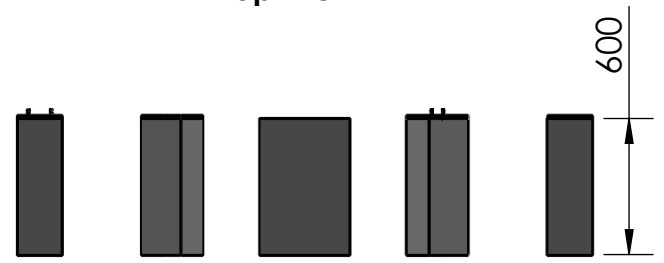
Cross-sectional View of column



Top View



Magnified View of Plate



Front View

REMARK:

- (1) Anchor bolt: 1/2"-8EA 12 Pcs
- (2) Every foundation Should maintain equal horizontal line.
- (3) Load is distributed over the foundation equally.
- (4) Recommended foundation height is 600 mm.
- (5) User can leave holes (130x130x250) on the concrete foundation with anchor bolt mounting or prepare a steel plate (200x200x12) pre-installed into the concrete. for each case anchor bolts should extrude about 40mm from concrete.

UNLESS OTHERWISE SPECIFIED: DIMENSIONS ARE IN MILLIMETERS SURFACE FINISH: TOLERANCES: LINEAR: ANGULAR:				FINISH:		DEBURR AND BREAK SHARP EDGES		DO NOT SCALE DRAWING		REVISION	
TITLE: Foundation Drawing (ART-125)											
DRAWN		NAME		SIGNATURE		DATE					
CHK'D		Mahmuda				31/1/18					
APPV'D		Shahed				31/1/18					
MFG		N/A									
Q.A		N/A									
MATERIAL: RCC								DWG NO. DR-C-F-007		A4	
WEIGHT:								SCALE:1:33.3		SHEET 1 OF 1	

6 5 4 3 2 1