

COOLING TOWER

Made in Bangladesh



- Environmentally Durable FRP body
- Size 10 TR to 500 TR (Single Cell)
- Energy saving FRP moulded fan
- IP55, S1 duty 1440 Rpm motor
- Belt Drive System for easy maintenance

Counter Flow ART Series

- Environmentally Durable FRP body
- Size 100TR to 500TR (Single Cell)
- Energy saving FRP moulded fan
- IP55, S1 duty 1440 Rpm motor
- Belt Drive System for easy maintenance



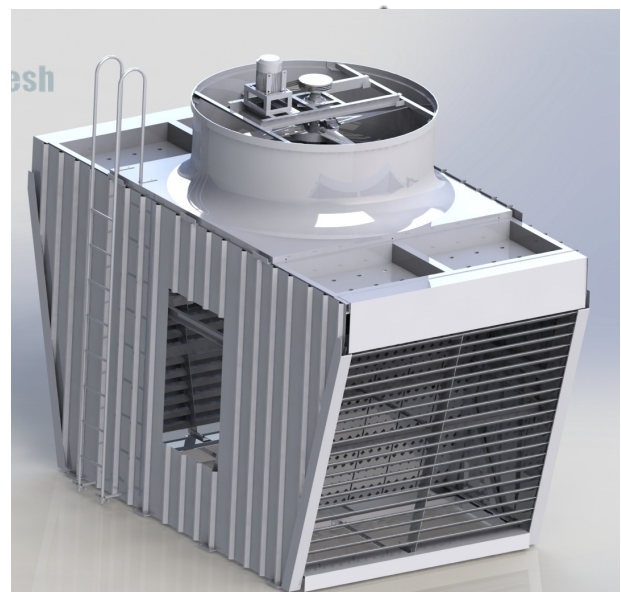
Cross Flow ARTX series



- Excellent for bad Air & Water quality
- FRP body & HDG Steel structure
- Energy saving FRP moulded fan
- IP55, S1 duty 1440 Rpm motor
- Direct Driven drive for easeness.

Counter Flow Splash type

- Excellent for bad Air & Water quality
- FRP body & HDG Steel structure
- Energy saving FRP moulded fan
- IP55, S1 duty 1440 Rpm motor
- Direct Driven drive for easeness.



Counter Flow Splash type